

# Port Monitor for KYOCERA Net Manager User Guide



## Legal Notes

Unauthorized reproduction of all or part of this guide is prohibited.

The information in this guide is subject to change without notice.

We cannot be held liable for any problems arising from the use of this product, regardless of the information herein.

© 2018 KYOCERA Document Solutions Inc.

## Regarding Trademarks

Microsoft®, Windows®, and Active Directory® are registered trademarks of Microsoft Corporation in the U.S. and/or other countries.

All other brand and product names herein are registered trademarks or trademarks of their respective companies.

# Table of Contents

## Chapter 1 Introduction

---

Features.....	1-1
Overview.....	1-1
Supported Languages.....	1-2
System Requirements.....	1-2

## Chapter 2 Installation

---

Installation Using the Wizard.....	2-1
Silent Install.....	2-3
Uninstall.....	2-5

## Chapter 3 Configuration

---

Adding KNM Port.....	3-1
Configure or Change KNM Port Settings.....	3-4
Deleting KNM Port.....	3-5



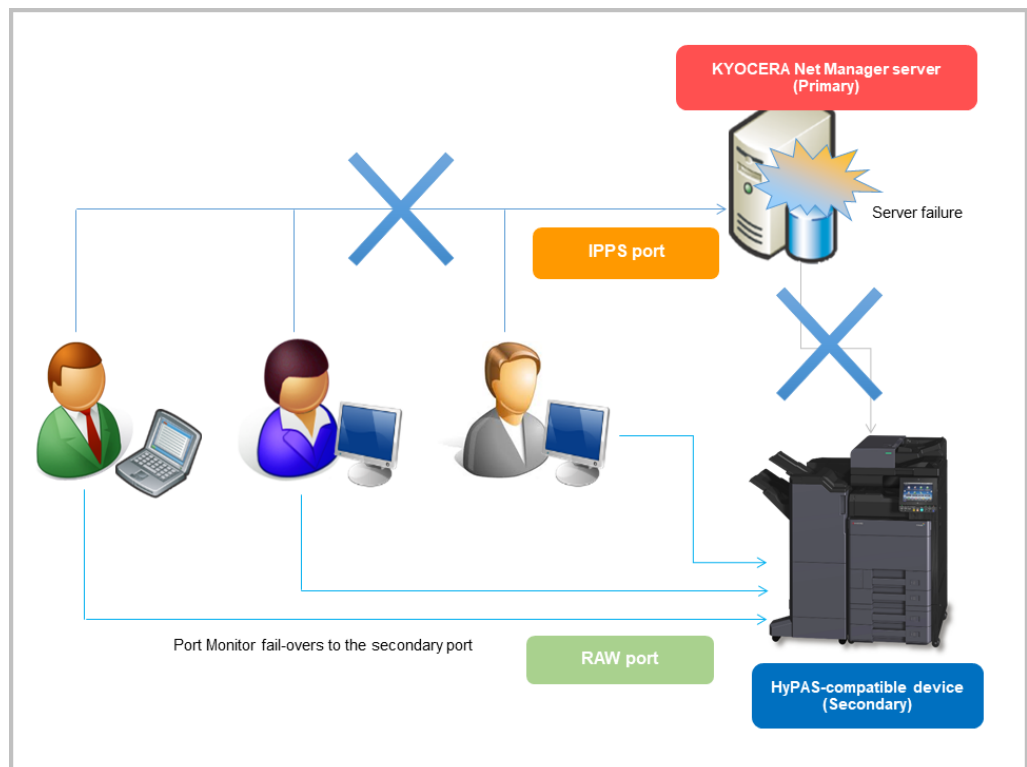
# 1 Introduction

This guide describes how to install and set up Port Monitor for KYOCERA Net Manager.

## Features

Port Monitor for KYOCERA Net Manager provides ports for a printing environment that uses KYOCERA Net Manager: one is for KYOCERA Net Manager server (Primary), and the other is for a HyPAS-compatible device (Secondary). It normally operates with the port for KYOCERA Net Manager server. However, in the event of a server failure, it provides a failover feature that automatically takes it over to the device port and continues processing jobs. When this happens, jobs will be forwarded using the RAW protocol.

Port Monitor can also divert jobs of a certain size or larger directly to the device bypassing the KYOCERA Net Manager server, so network traffic can be reduced and document workflow performance can be improved.



## Overview

## Supported Languages

Port Monitor for KYOCERA Net Manager supports the following languages:

English	Japanese	Traditional Chinese	Simplified Chinese	Korean
German	French	Spanish	Italian	Bulgarian
Bosnian	Czech	Croatian	Hungarian	Lithuanian
Latvian	Polish	Portuguese	Russian	Slovak
Slovenian	Serbian	Turkish	Estonian	Arabic
Norwegian	Icelandic			

## System Requirements

Port Monitor for KYOCERA Net Manager operates in the following environment. Please review these before the installation.

Item	Description
Supported Devices	Devices supporting HyPAS features
Supported OS	Windows 7, Windows 8, Windows 8.1, Windows 10, Windows 2008 Server, Windows 2008 Server R2, Windows 2012 Server, Windows 2012 Server R2, Windows 2016 Server 32 bit/64 bit)
CPU	CPUs that can run the above OS without problems

The following software products are also required:

- KYOCERA Net Manager
- KX Driver ver. 7.2 and later

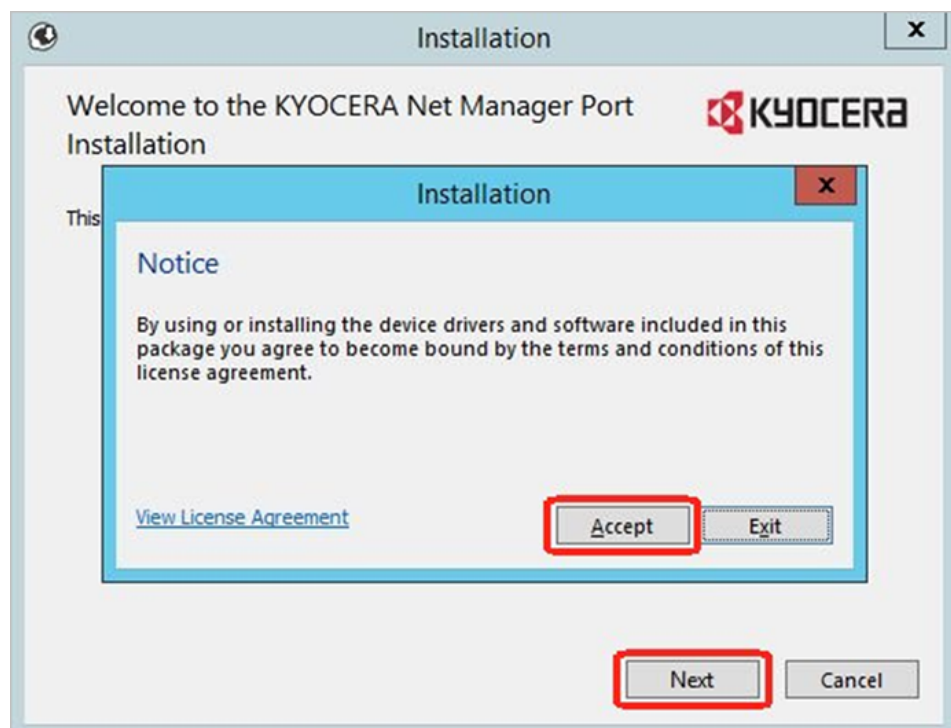
## 2 Installation

This section describes how to install and set up Port Monitor for KYOCERA Net Manager. Normally, installation takes place using the wizard. Port Monitor for KYOCERA Net Manager also offers Silent Install. It allows for administrators to install and configure port settings in one action from the command prompt.

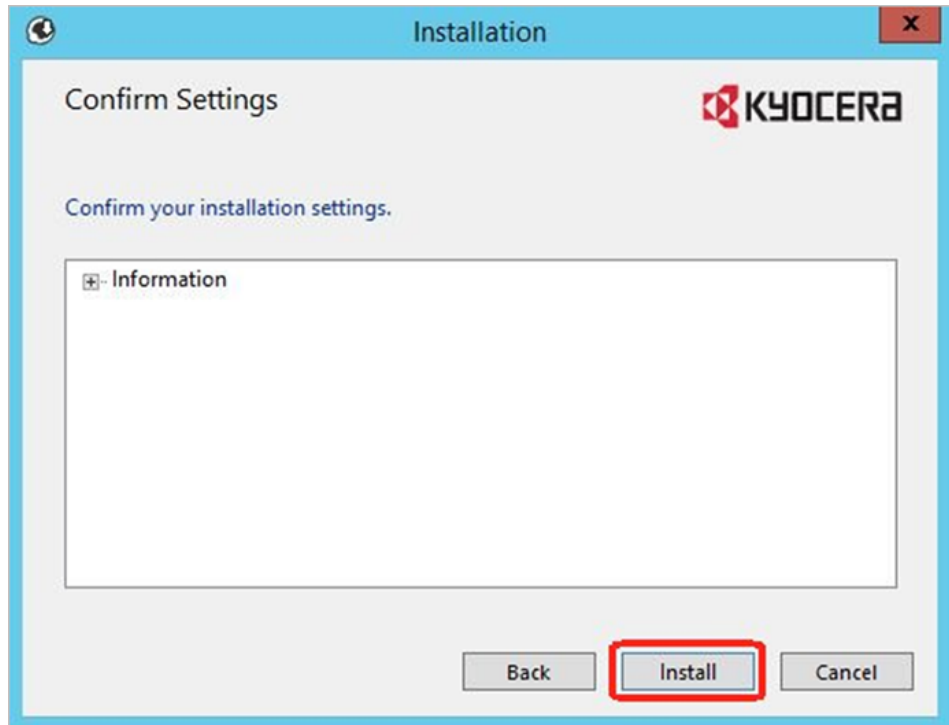
### Installation Using the Wizard

Follow these steps to install:

- 1 To start the installation process, double-click **setup.exe** in the KYOCERA Net Manager Port setup folder.
- 2 The license agreement screen will be displayed. To review the license agreement, click **View License Agreement**. Read the License Agreement, click **Accept**, and then click **Next**.



- 3 The Confirm Settings screen is displayed. Click **Install** to start the installation.



- 4 When installation finishes, the Installation Completed screen will be displayed. Click Finish to complete the installation. If you check the Start KYOCERA Net Manager Port checkbox, the KYOCERA Net Manager Port Configuration dialog will open after installation.



## Silent Install

Silent Install runs installation through configuration in one action by directly entering commands from the Windows command prompt. This is convenient when installing on multiple PCs with the same settings.

To run Silent Install, you are required to install KX Driver for the target device on your PC in advance.

- 1 In Windows, open a command prompt with Administrator privileges.
- 2 Navigate to the folder containing the Port Monitor installer file (setup.exe), and then enter and execute the commands as shown.



**Commands are case sensitive.**

```
setup.exe CREATEPORT -s -portname "KNM Port" -pri_addr "10.10.10.10"
-pri_queue "Queue1" -com_jobforward "1" -com_jobsize "512" -sec_addr
"10.10.10.11" -sec_port "PrintFollow"
```

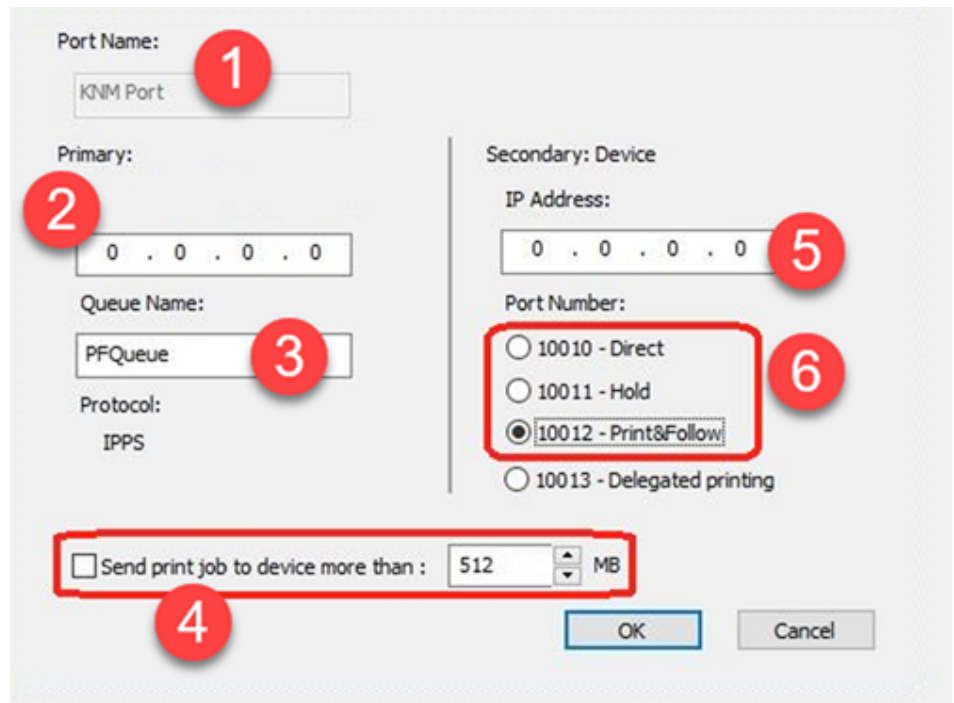
In this example, port name is "KNM Port", primary port's address is "10.10.10.10", queue name is "Queue1", jobs larger than 512 MB are sent directly to the device (Secondary), the secondary port's address is "10.10.10.11", the port is specified as "PrintFollow".

If you have turned on Autodetect site server address in KX Driver, enter "10.00.00.00" for -pri\_addr as a dummy site server address.

Command	Description	Corresponding setting in KX Driver
setup.exe CREATEPORT -s	Explicitly indicates Silent install.	-
-portname " "	Port name for Port Monitor. Specify the port name in quotes (" ").	(1)
-pri_addr " "	Primary port's IP address. Specify the address in quotes (" ").	(2)
-pri_queue " "	Queue name. Specify the name in quotes (" ").	(3)
-com_jobforward " "	Divert by job size: 0: No, 1: Yes  Jobs larger than the specified size are sent directly to the device (Secondary).	(4)

Command	Description	Corresponding setting in KX Driver
-com_jobsize " "	Size to divert. Specify job size in quotes (" "). The range is 1-9999 MB. Jobs larger than the specified size are sent directly to the device (Secondary).	(4)
-sec_addr " "	Secondary port's IP address. Specify the address in quotes (" ").	(5)
-sec_port " "	Secondary Port Number. Specify one of the following in quotes (" "): <ul style="list-style-type: none"> <li>• Direct</li> <li>• Hold</li> <li>• PrintFollow</li> </ul>	(6)

The numbers correspond to the commands in the table above.



- 3** Associate the Port Monitor ports with the port in the target device's KX Driver. From the command prompt, type the following and execute:

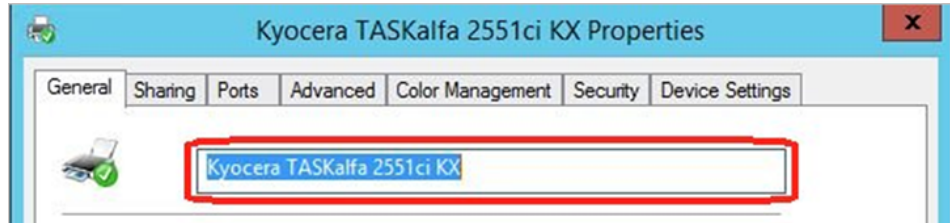
For 32-bit OS environment:

kminst32 SETPRN -p "device name" -pt "KNM Port"

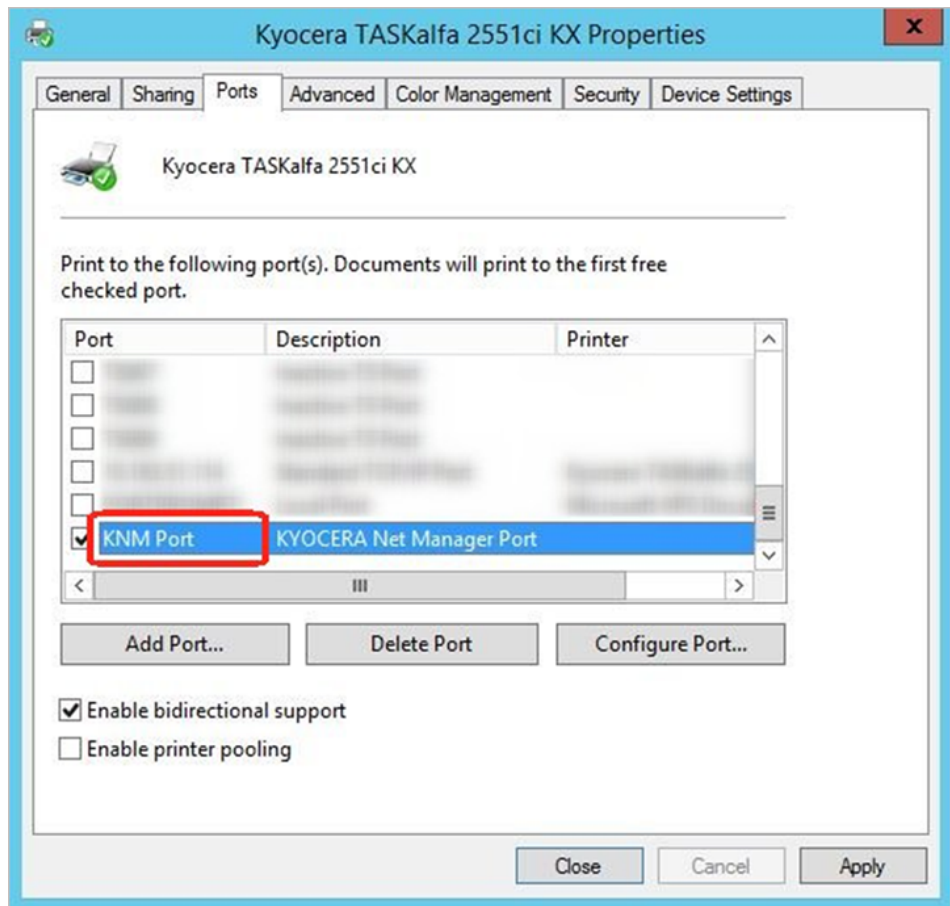
For 64-bit OS environment:

kminst64 SETPRN -p "device name" -pt "KNM Port"

For "device name," enter the printer name shown in KX Driver properties.



For "knmport," enter the port name shown in KX Driver properties.

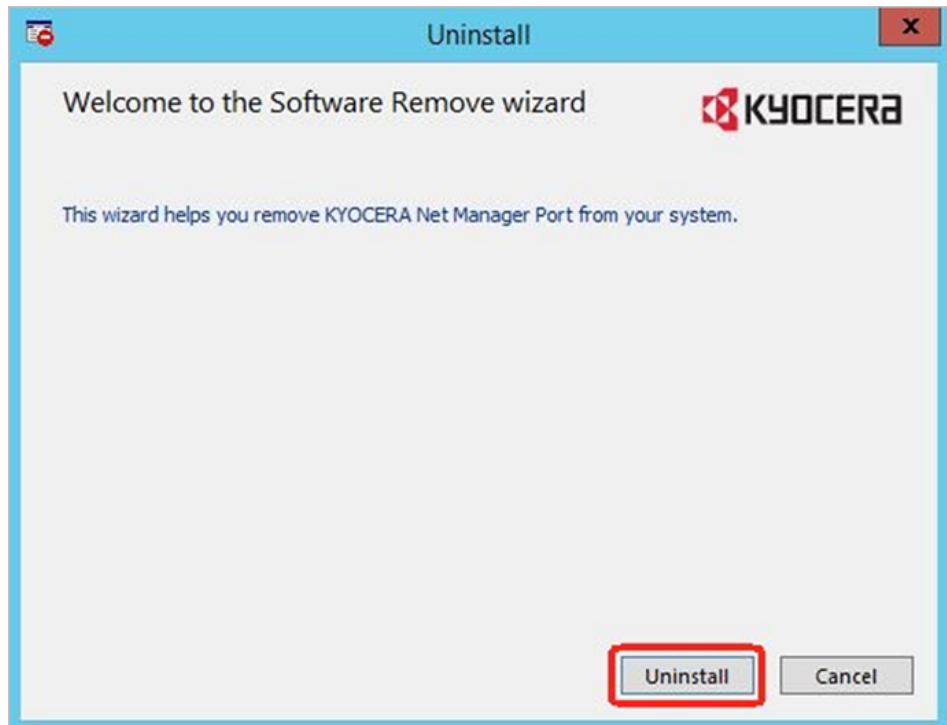


Silent install is now complete.

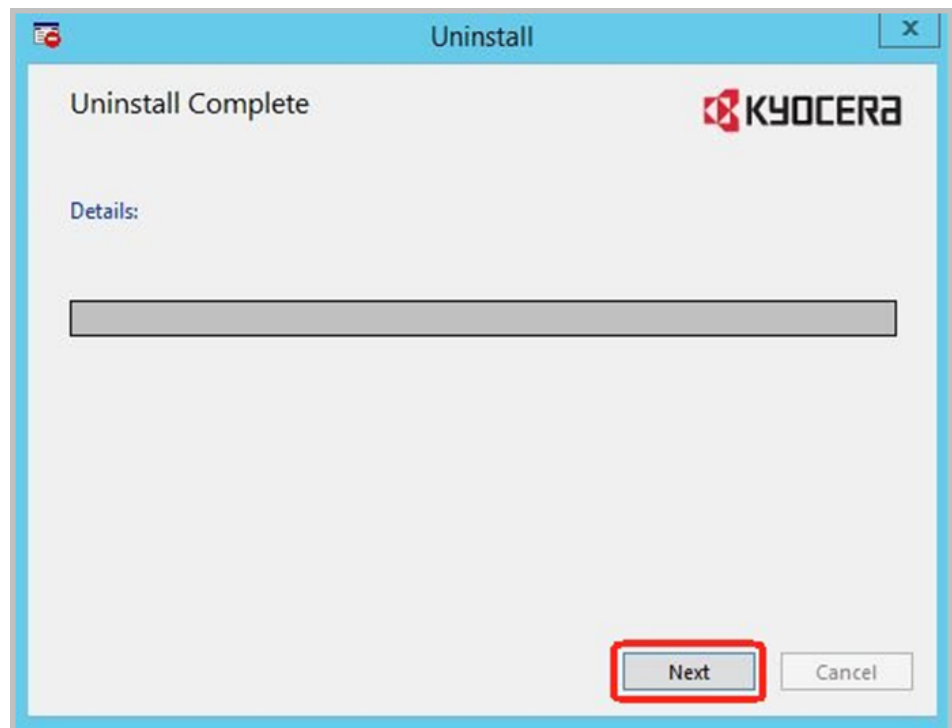
## Uninstall

Port Monitor for KYOCERA Net Manager can be uninstalled by following these steps:

- 1 In Windows, navigate to Program or App controls (Control Panel or Settings, depending on version.)
- 2 Find KYOCERA Net Manager Port and the option to uninstall.
- 3 When the Uninstall dialog box appears, select **Uninstall**.



- 4 When the Uninstall Complete dialog box appears, click **Next**.



- 5 The Restart Your System dialog box is displayed. To complete the uninstall, close all running programs and restart the PC.



## 3 Configuration

After installing Port Monitor for KYOCERA Net Manager, you must add KNM Port to the target device's KX Driver.

This section explains how to add, change the configuration of, or delete KNM Port.

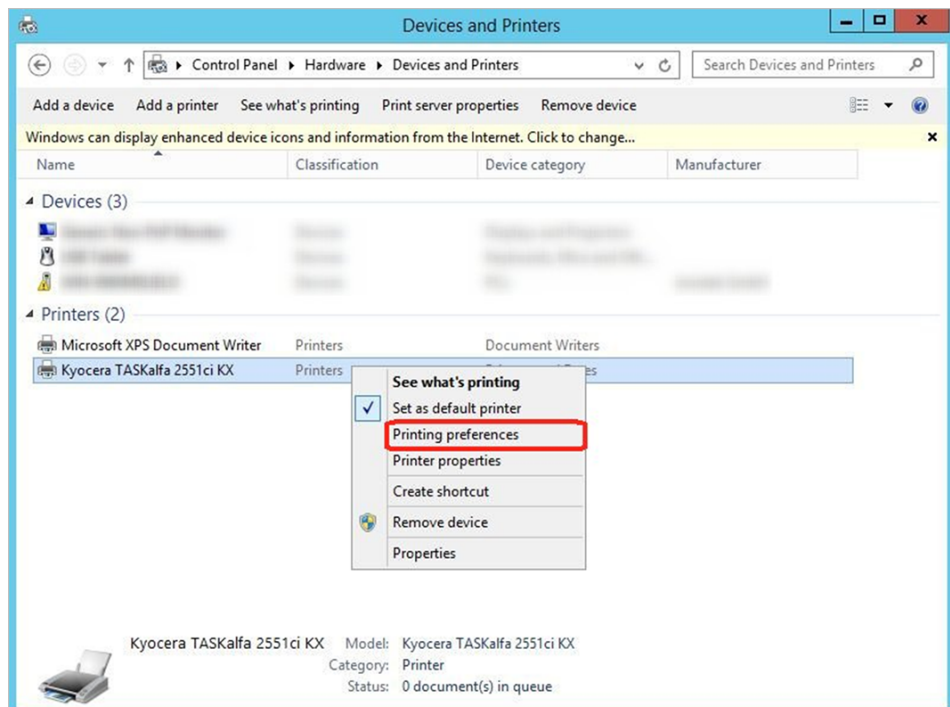
### Adding KNM Port

To add KNM Port, follow the steps below.

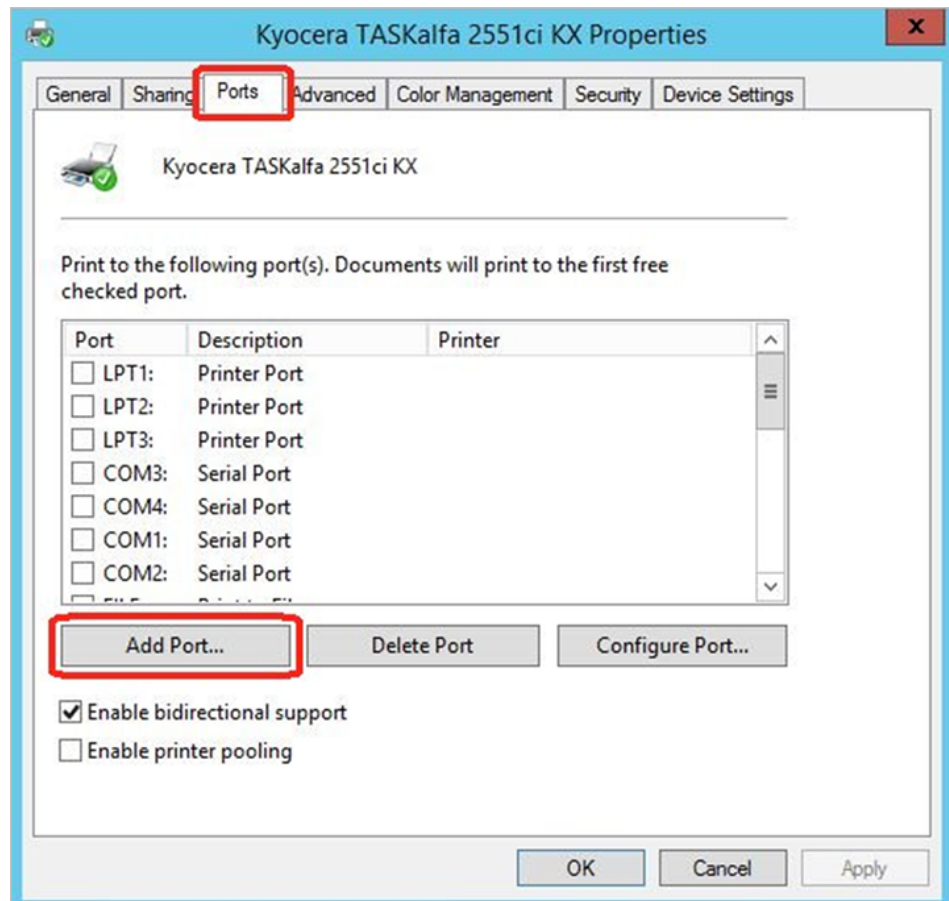


You are not required to perform these steps if you have already added KNM Port during the Silent Install.

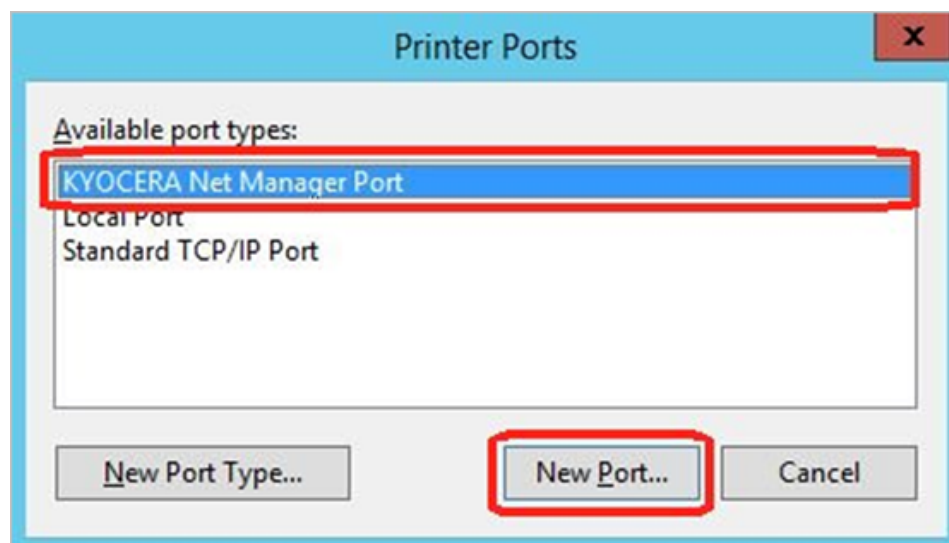
- 1 Locate the printer in Windows Settings or Control Panel and open Printer Properties.



- 2 Select the Ports tab and click **Add Port**.

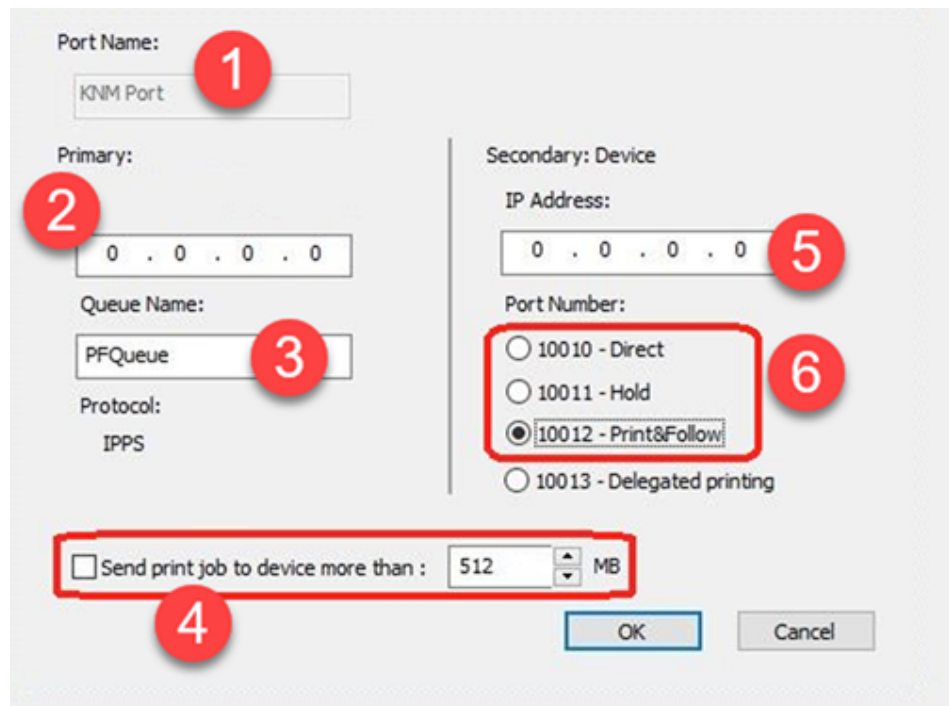



- 3 Click **KYOCERA Net Manager Port**, then click **New Port**.



- 4 The KYOCERA Net Manager Port configuration dialog appears. Configure the following settings as needed. When the configuration is completed, click **OK**.

The numbers correspond to the commands in the table below.



Key	Item	Description
(1)	Port Name	You can enter up to 32 single-byte alphanumeric characters. Once set, it cannot be changed. The default is KNM Port.
(2)	Primary IP Address	IP address of the KYOCERA Net Manager server. When Auto detect site server address is on, this value will be shown as "Auto detect site server address". 
(3)	Queue Name	Queue name of the KYOCERA Net Manager server. You can enter up to 64 single-byte alphanumeric characters.
(4)	Send print job to device more than	When unchecked, all jobs are sent to the KYOCERA Net Manager server. (This is the default setting.)

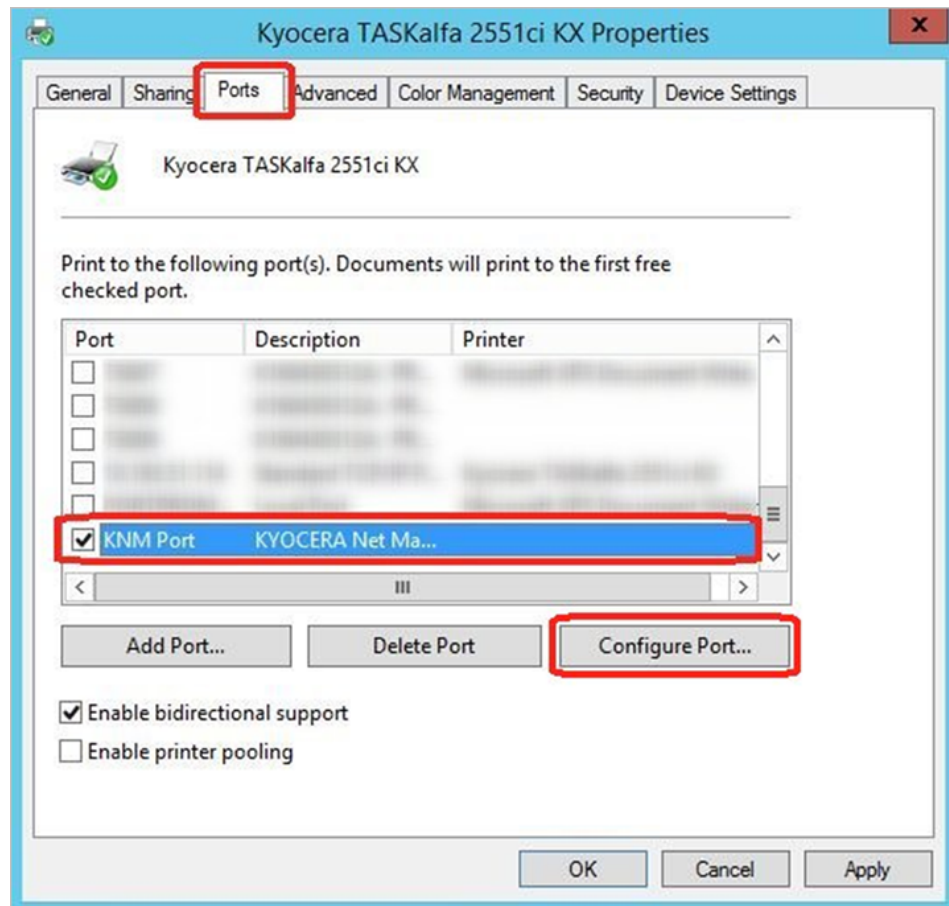
Key	Item	Description
		When checked, jobs larger than the specified size are sent directly to the device. (Secondary.)  The range is 1-9999 MB. The default is 512 MB.
(5)	Secondary: Device IP address	The device's IP address.
(6)	Port Number	
	10010: Direct	The job is released immediately.
	10011: Hold	The job is stored on the device first and then released when the user logs into it.
	10012: Print&Follow	The job is stored on the device first. Then, a user can release it on the device or on another client device that designates the device as its device server.
	10013: Delegated printing	A delegated user can release a job sent by another user and print it.

- 5 In the Printer Port dialog, click **Close** .
- 6 In Printer Properties, click **Apply** and then **OK**.

## Configure or Change KNM Port Settings

KNM Port settings can be changed by following these steps:

- 1 Locate the printer in Windows Settings or Control Panel and open Printer Properties.
- 2 Select the Ports tab, click **KNM Port**, and click **Configure Port**.

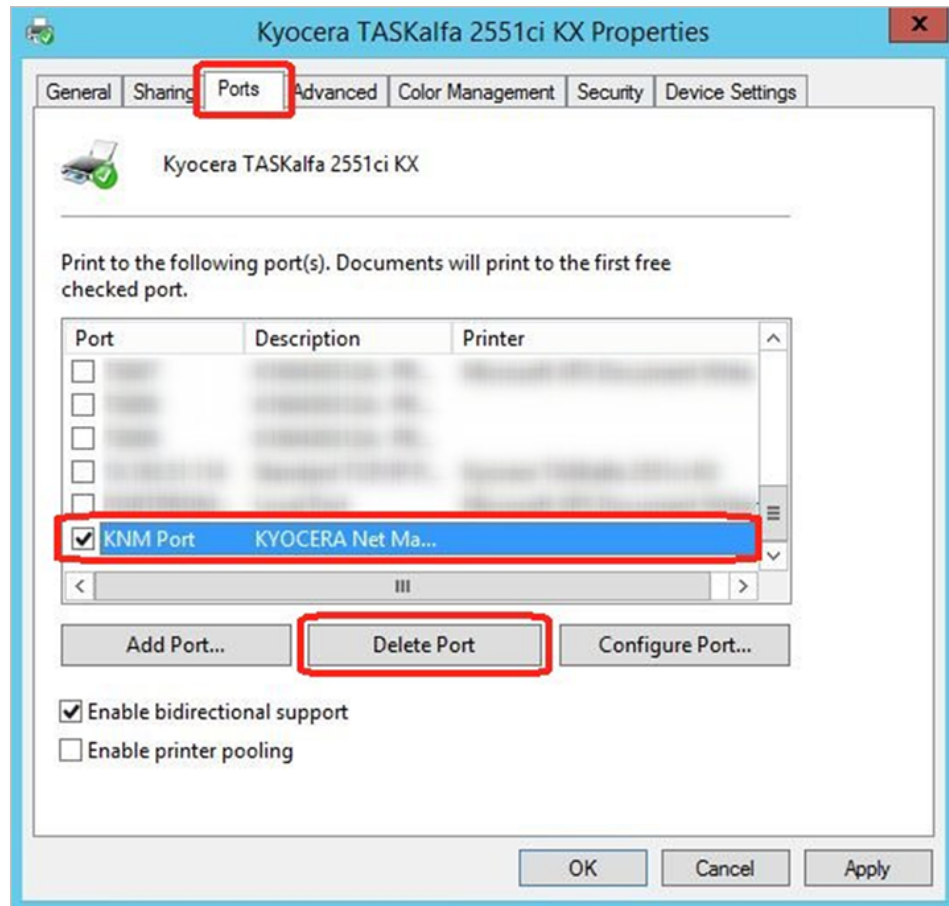


- 3 The KYOCERA Net Manager configuration dialog is displayed. Change settings as needed and click **OK**.
- 4 In the Printer Properties dialog, click **Apply**, and then **OK**.

## Deleting KNM Port

To delete KNM Port, follow these steps:

- 1 Locate the printer in Windows Settings or Control Panel and open Printer Properties.
- 2 Select the Ports tab, click **KNM Port**, and click **Delete Port**.



- 3 Click **OK** on the confirmation screen.
- 4 In the Printer Properties dialog, click **Apply**, and then **OK**.

**KYOCERA Document Solutions America, Inc.****Headquarters**

225 Sand Road,  
Fairfield, New Jersey 07004-0008, USA  
Phone: +1-973-808-8444  
Fax: +1-973-882-6000

**Latin America**

8240 NW 52nd Terrace, Suite 301  
Miami, Florida 33166, USA  
Phone: +1-305-421-6640  
Fax: +1-305-421-6666

**KYOCERA Document Solutions Canada, Ltd.**

6120 Kestrel Rd., Mississauga, ON L5T 1S8,  
Canada  
Phone: +1-905-670-4425  
Fax: +1-905-670-8116

**KYOCERA Document Solutions****Mexico, S.A. de C.V.**

Calle Arquimedes No. 130, 4 Piso, Colonia Polanco  
Chapultepec, Delegation Miguel Hidalgo,  
Distrito Federal, C.P. 11560, México  
Phone: +52-555-383-2741  
Fax: +52-555-383-7804

**KYOCERA Document Solutions Brazil, Ltda.**

Alameda África, 545, Pólo Empresarial Consbrás,  
Tamboré, Santana de Parnaíba, State of São Paulo,  
CEP 06543-306, Brazil  
Phone: +55-11-2424-5353  
Fax: +55-11-2424-5304

**KYOCERA Document Solutions Chile SpA**

Jose Ananias 505, Macul. Santiago, Chile  
Phone: +56-2-2670-1900  
Fax: +562-2350-7150

**KYOCERA Document Solutions****Australia Pty. Ltd.**

Level 3, 6-10 Talavera Road North Ryde NSW, 2113,  
Australia  
Phone: +61-2-9888-9999  
Fax: +61-2-9888-9588

**KYOCERA Document Solutions****New Zealand Ltd.**

Ground Floor, 19 Byron Avenue, Takapuna, Auckland,  
New Zealand  
Phone: +64-9-415-4517  
Fax: +64-9-415-4597

**KYOCERA Document Solutions****Asia Limited**

13/F., Mita Centre, 552-566, Castle Peak Road Tsuen  
Wan, New Territories, Hong Kong  
Phone: +852-2496-5678  
Fax: +852-2610-2063

**KYOCERA Document Solutions****(China) Corporation**

8F, No. 288 Nanjing Road West, Huangpu District,  
Shanghai, 200003, China  
Phone: +86-21-5301-1777  
Fax: +86-21-5302-8300

**KYOCERA Document Solutions****(Thailand) Corp., Ltd.**

335 Ratchadapisek Road, Wongsawang, Bangsue,  
Bangkok 10800,  
Thailand  
Phone: +66-2-586-0333  
Fax: +66-2-586-0278

**KYOCERA Document Solutions****Singapore Pte. Ltd.**

12 Tai Seng Street #04-01A, Luxasia Building,  
Singapore 534118  
Phone: +65-6741-8733  
Fax: +65-6748-3788

**KYOCERA Document Solutions****Hong Kong Limited**

16/F., Mita Centre, 552-566, Castle Peak Road Tsuen  
Wan, New Territories, Hong Kong  
Phone: +852-3582-4000  
Fax: +852-3185-1399

**KYOCERA Document Solutions****Taiwan Corporation**

6F., No.37, Sec. 3, Minquan E. Rd., Zhongshan Dist.,  
Taipei 104, Taiwan R.O.C.  
Phone: +886-2-2507-6709  
Fax: +886-2-2507-8432

**KYOCERA Document Solutions Korea Co., Ltd.**

#10F Daewoo Foundation Bldg 18, Toegye-ro, Jung-  
gu, Seoul, Korea  
Phone: +822-6933-4050  
Fax: +822-747-0084

**KYOCERA Document Solutions****India Private Limited**

Second Floor, Centrum Plaza, Golf Course Road,  
Sector-53, Gurgaon, Haryana 122002, India  
Phone: +91-0124-4671000  
Fax: +91-0124-4671001

**KYOCERA Document Solutions Europe B.V.**

Bloemlaan 4, 2132 NP Hoofddorp,  
The Netherlands  
Phone: +31-20-654-0000  
Fax: +31-20-653-1256

**KYOCERA Document Solutions Nederland B.V.**

Beechavenue 25, 1119 RA Schiphol-Rijk,  
The Netherlands  
Phone: +31-20-5877200  
Fax: +31-20-5877260

**KYOCERA Document Solutions (U.K.) Limited**

Eldon Court, 75-77 London Road,  
Reading, Berkshire RG1 5BS, United Kingdom  
Phone: +44-118-931-1500  
Fax: +44-118-931-1108

**KYOCERA Document Solutions Italia S.p.A.**

Via Monfalcone 15, 20132, Milano, Italy  
Phone: +39-02-921791  
Fax: +39-02-92179-600

**KYOCERA Document Solutions Belgium N.V.**

Sint-Martinusweg 199-201 1930 Zaventem, Belgium  
Phone: +32-2-7209270  
Fax: +32-2-7208748

**KYOCERA Document Solutions France S.A.S.**

Espace Technologique de St Aubin  
Route de l'Orme 91195 Gif-sur-Yvette CEDEX, France  
Phone: +33-1-69852600  
Fax: +33-1-69853409

**KYOCERA Document Solutions Espana, S.A.**

Edificio Kyocera, Avda. de Manacor No.2, 28290 Las  
Matas (Madrid), Spain  
Phone: +34-91-6318392  
Fax: +34-91-6318219

**KYOCERA Document Solutions Finland Oy**

Atomitie 5C, 00370 Helsinki, Finland  
Phone: +358-9-47805200  
Fax: +358-9-47805212

**KYOCERA Document Solutions****Europe B.V., Amsterdam (NL) Zürich Branch**

Hohlstrasse 614, 8048 Zürich, Switzerland  
Phone: +41-44-9084949  
Fax: +41-44-9084950

**KYOCERA Bilgitas Document Solutions****Turkey A.S.**

Altunizade Mah. Prof. Fahrettin Kerim Gökay Cad.  
No:45 34662 Üsküdar İstanbul, Turkey  
Phone: +90-216-339-0200  
Fax: +90-216-339-0700

**KYOCERA Document Solutions****Deutschland GmbH**

Otto-Hahn-Strasse 12, 40670 Meerbusch, Germany  
Phone: +49-2159-9180  
Fax: +49-2159-918100

**KYOCERA Document Solutions Austria GmbH**

Wienerbergstraße 11, Turm A, 18. OG, 1100 Wien,  
Austria  
Phone: +43-1-863380  
Fax: +43-1-86338-400

**KYOCERA Document Solutions Nordic AB**

Esbogatan 16B 164 75 Kista, Sweden  
Phone: +46-8-546-550-00  
Fax: +46-8-546-550-10

**KYOCERA Document Solutions Norge Nuf**

Olaf Helsetsv. 6, 0619 Oslo, Norway  
Phone: +47-22-62-73-00  
Fax: +47-22-62-72-00

**KYOCERA Document Solutions Danmark A/S**

Ejby Industrivej 60, DK-2600 Glostrup, Denmark  
Phone: +45-70223880  
Fax: +45-45765850

**KYOCERA Document Solutions Portugal Lda.**

Rua do Centro Cultural, 41 (Alvalade) 1700-106  
Lisboa,  
Portugal  
Phone: +351-21-843-6780  
Fax: +351-21-849-3312

**KYOCERA Document Solutions****South Africa (Pty) Ltd.**

KYOCERA House, Hertford Office Park,  
90 Bekker Road (Cnr. Allandale), Midrand, South Africa  
Phone: +27-11-540-2600  
Fax: +27-11-466-3050

**KYOCERA Document Solutions Russia LLC.**

Building 2, 51/4, Schepkina St., 129110, Moscow,  
Russia  
Phone: +7(495)741-0004  
Fax: +7(495)741-0018

**KYOCERA Document Solutions Middle East**

Dubai Internet City, Bldg. 17,  
Office 157 P.O. Box 500817, Dubai,  
United Arab Emirates  
Phone: +971-04-433-0412

**KYOCERA Document Solutions Inc.**

2-28, 1-chome, Tamatsukuri, Chuo-ku  
Osaka 540-8585, Japan  
Phone: +81-6-6764-3555  
<http://www.kyoceradocumentsolutions.com>